

Conext Battery Fuse Combiner Box

Combine, connect and disconnect Conext inverter/chargers with one battery bank

The Conext™ Battery Fuse Combiner Box 250 combines up to three Conext XW+ inverter/chargers with one battery bank using a single battery pole disconnect method and provides fuse protection for cables, batteries and inverter/chargers. Two Battery Fuse Disconnect Box 250s can be configured side-by-side to accommodate dual battery pole disconnection requirements. A smaller, more compact Battery Fuse Combiner Box 160 is available battery side application with Conext MPPT Solar Charge Controllers.

Why choose Conext Battery Fuse Combiner Box?



Higher return on investment

- One low cost device to combine up to three Conext inverter chargers with one battery bank
- Standardized repeatable and cost effective installation method



Flexible

- Single or dual pole battery disconnection for Conext XW and SW inverter chargers
- Single or dual pole battery disconnection for Conext MPPT Solar Charge Controllers



Easy to service

- Clear plastic window allows visual no-touch inspection of fuses
- Access holes for volt meter probes allows for testing without interrupting system
- Lockout accepts lead seal to guard against unauthorized access



Easy to install

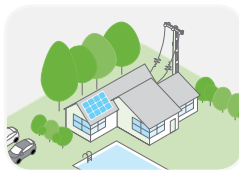
- Wall-mount or flush-mount
- Lug nut cable connections



Product applications



Backup power



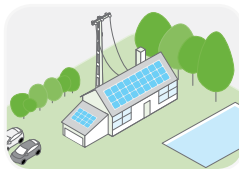
Residential grid-tie solar with backup power



Off-grid solar



Community electrification



Self-consumption

Device short name	Battery Fuse Combiner Box 160	Battery Fuse Combiner Box 250
Electrical specifications		
Nominal voltage	24 / 48 V DC	24 / 48 V DC
Nominal current	160 A	250 A
Fuse specifications		
Type	DIN	DIN
Size	NH00, NH000	NH1
Number	3	3
Cable connections		
Quantity per pole	3	3
Maximum Cable Size	70 mm ² (2/0)	107 mm ² (4/0)
Terminal Type	M8	M10
General specifications		
Part number	865-1030-01	865-1031-01
Product dimensions (H x W x D)	16.3 x 10.7 x 8.0 cm (6.4 x 4.2 x 3.1 in)	24.6 x 18.6 x 11.0 cm (9.7 x 7.3 x 4.3 in)
Shipping dimensions (H x W x D)	29.2 x 15.8 x 14.5 cm (11.5 x 6.2 x 4.5 in)	34.3 x 24.6 x 26.4 cm (13.5 x 9.7 x 10.4 in)
Product weight	1.4 kg (3.1 lb)	3.6 kg (7.9 lb)
Shipping Weight	1.8 kg (4.0 lb)	4.2 kg (9.2 lb)
Mouting options	Wall-mount, flush-mount	
Operating temperature range °C	-20... 70	
Warranty	2 - 5 years (depending on country)	
Regulatory approval		
Markings	CE	
Standards	EN/IEC 60947-1, EN/IEC 60947-3, IEC 60269-2-1	
IP degree of protection	IP20 conforming to IEC 60529	
Included parts		
Fuse box		
Mounting hardware		
Top terminal shield		
Fuses (3)		
Combiner bar		
Compatible products		
Conext XW+ (230 V)	XW 7048 E product no. 865-7048-61 XW 8548 E product no. 865-8548-61	
Conext XW+ (120/240 V)	XW 5548 NA product no. 865-5548-01 XW 6848 NA product no. 865-6848-01	
Conext SW (230 V)	SW 2524 product no. 865-2524-61 SW 4024 product no. 865-4024-61 SW 4048 product no. 865-4048-61	
Conext SW (120 V)	SW 2524 product no. 865-2524 SW 4024 product no. 865-4024 SW 4048 product no. 865-4048	
Conext MPPT 60 150	Product no. 865-1030-1	
Conext MPPT 80 600	Product no. 865-1032	
Conext portable installation and configuration tool	Product no. 865-1155-01	

Specifications are subject to change without notice.